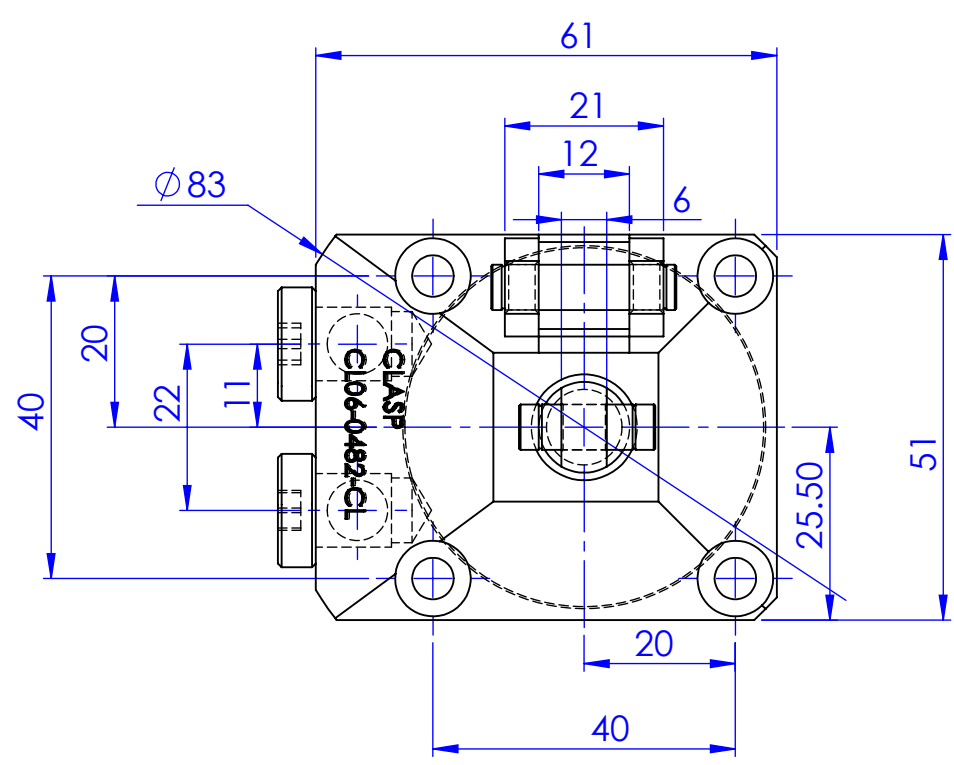
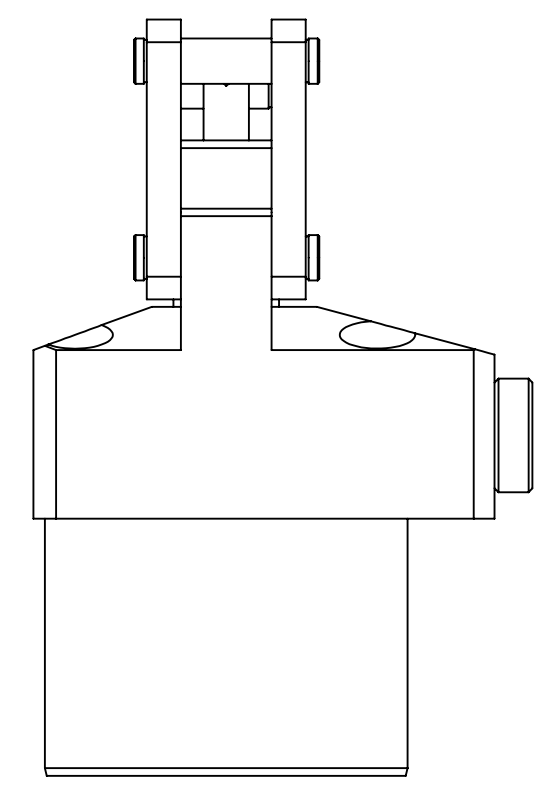
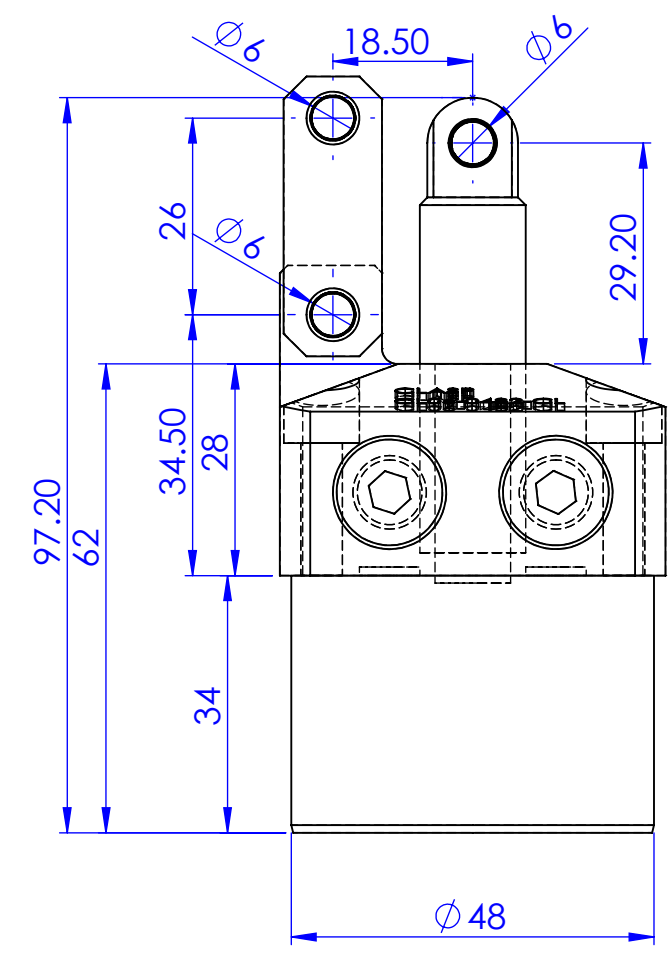
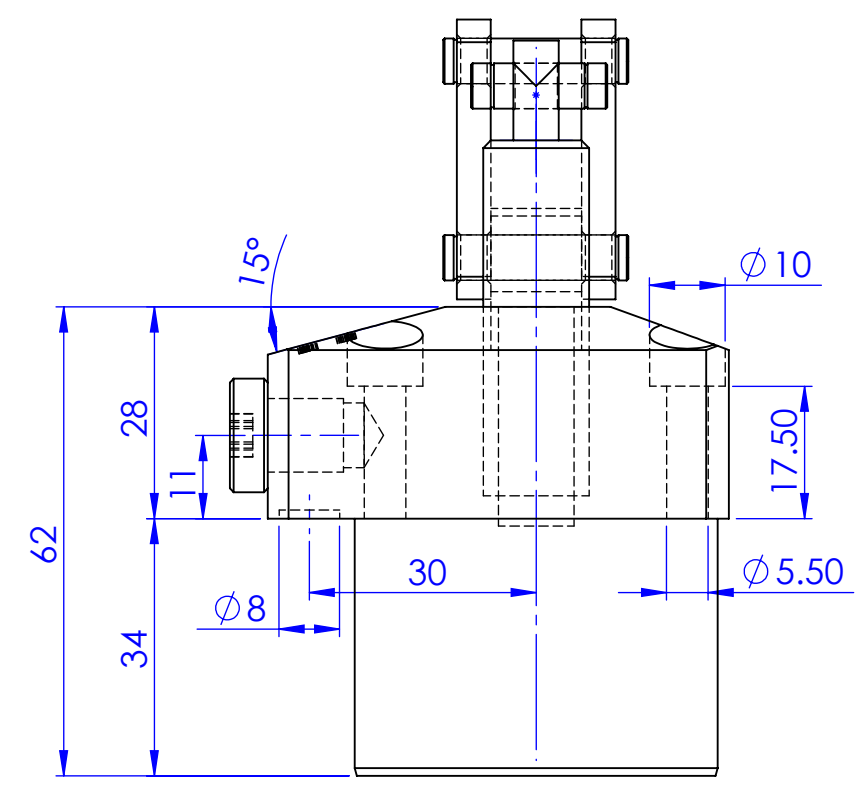
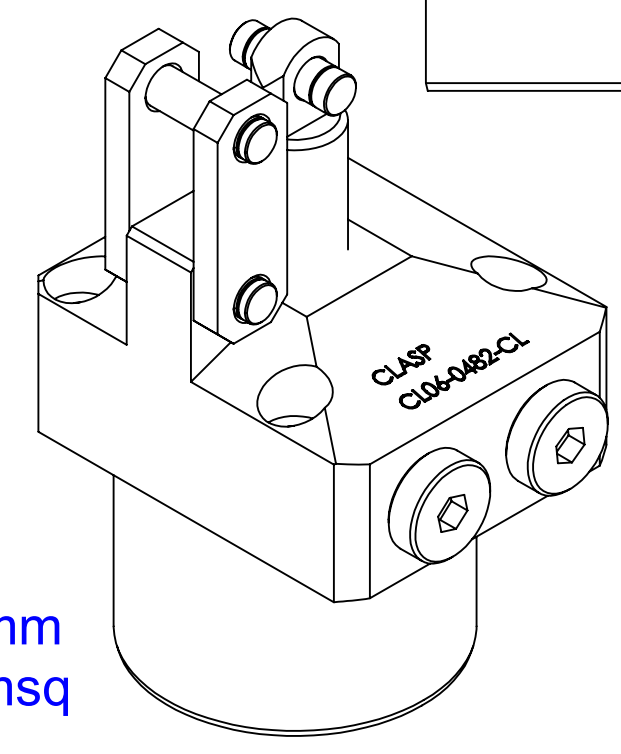





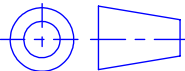


▽▽ (▽▽▽)
DEBURR



CL06-0482-CL
Bore dia - 30mm
Piston dia - 14mm
Full stroke -23.5mm
Locking stroke - 20.5mm
Lock cyl.area - 7.07cmsq



Surface Finish																ZONE	SCALE	1:1		
Ra Value μm	0.025	0.05	0.1	0.2	0.4	0.8	1.2	1.6	2.5	3.2	5.0	10				MATERILAS				
Ra Symbol	N1	N3	N2	N4	N5	N6	N7	N8	N9	N10	N11	N12						GROUP No:—	WEIGHT 1.5KG	
																	LINK			
			DESCRIPTION													Qty.	Casting/forging/ welding drg.no			
Drawn	Prabhakar		DESCRIPTION																	
Checked	Prabhakar		CL06-0482-CL																	
Approved	19/09/21																			
Date	19/09/21															Drawing NO				
Clamping elements type			CLASP BANGALORE-72													SHEET: 1 of 1		Sheet No: 1/1		

General Tolerance where not specified									
Liner - length or Diameter					Angular-length of shoter side of the angle				
0.5-6	6-30	30-120	120-315	315-1000	1000-2000	Upto 6	6-30	30-120	120-400
± 0.1	± 0.2	± 0.3	± 0.5	± 0.8	± 1.2	$\pm 1^\circ$	$\pm 30^\circ$	$\pm 10^\circ$	$\pm 20^\circ$